

SKANVEIR COMBI BEAM FOR LIFTING OF PLATES AND STRIPS



Wide range of plate sizes

Versatility, ease of use and total investment costs were the main factors for our customer handling a wide range of different plate and strip sizes and thicknesses in their storage, cutting and bending operations. Plate lengths 2-18 m, widths 0,2-3 m and thicknesses 2-25 mm should be efficiently lifted using a new lifting beam and existing long span overhead crane with limited lifting capacity.

Versatile combi beam

Lifting a single thin sheet from pile is faster and simpler with vacuum lifter than with magnets. On the other hand narrow strips limit the suction pad size and scrap would soon damage them. Skanveir presented a combi beam with suction pads for quick handling of plates, and magnets for narrow strips and scrap.

In addition, the beam is divided into two identical parts. Vast majority of plates is shorter than 8 m and are conveniently lifted in one half of beam. For longer plates the two parts are connected together.



Skanveir Oy manufactures Magnetic and Vacuum Lifters for mechanical engineering industries. The company has more than 35 years of experience in it's field. The customers are mostly found in shipyards, steel service centres and steel mills.

**SKANVEIR**

Skanveir Oy
Televisiotie 8, 15860 HOLLOLA, FINLAND
Tel. +358 3 780 3230
Fax. +358 3 780 8091
www.skanveir.com

VACUUM LIFTERS AT AUTOMATED PLATE STORAGE



Quick automatic gripping

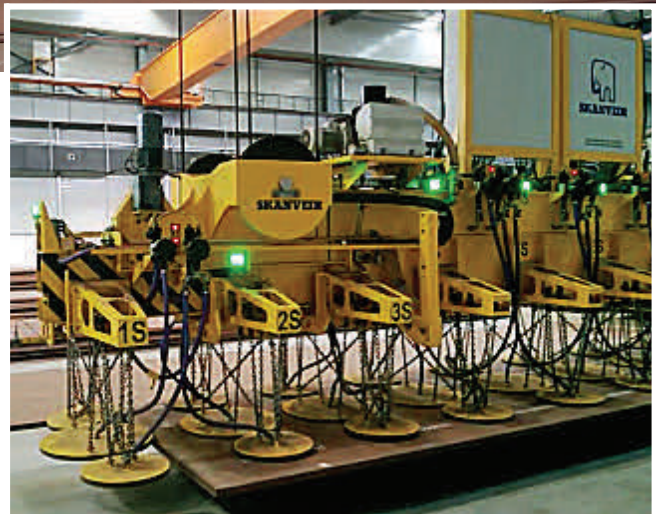
Steel mill handles large amount of plates at production and at shipping terminal. Plate lengths 3 m to 15 m, weighing up to 18,5 tons, are lifted with vacuum lifting beams at several stages.

Suction pads grip just the topmost plate of the pile, enabling quick automatic gripping without need to drop off excess plates.

Versatile telescopic beam

Telescopic beam allows storage of shorter plates near each other, saving valuable storage space. Fixed length beams are used at production stages.

Vacuum beam's robust construction with smart weight optimized solutions withstands heavy duty. Automation controls each individual suction pad, shutting off vacuum from the pads that are outside of the plate.



Skanveir Oy manufactures Magnetic and Vacuum Lifters for mechanical engineering industries. The company has more than 35 years of experience in it's field. The customers are mostly found in shipyards, steel service centres and steel mills.



Skanveir Oy
Televisiotie 8, 15860 HOLLOLA, FINLAND
Tel. +358 3 780 3230
Fax. +358 3 780 8091
www.skanveir.com

LOADING AND UNLOADING OF PLASMA CUTTING TABLE



Load or unload with one lift

A shipyard needed to increase the utilisation rate of their plasma cutting machines. Skanveir magnetic beam allows lifting of full-size plates onto the cutting table, as well as the cut pieces and scrap off the table with one lift. The smallest pieces can be lifted using the middle section of the lifter where the magnets have full coverage. The beam also features motorised slewing to enable turning the plates horizontally.

Increased output

Emptying the cutting table quickly increases the running time of the plasma cutting machine, particularly for large cutting runs. The operator no longer needs to lift and sort individual pieces, and is able to operate several cutting machines simultaneously.

Magnets developed for the purpose

Skanveir's for the purpose developed magnets combine high lifting capacity and large grip area while being lightweight to allow maximised payloads.



Skanveir Oy manufactures Magnetic and Vacuum Lifters for mechanical engineering industries. The company has more than 35 years of experience in it's field. Shipyards, steel service centres and steel mills are among the major users of our services.



Skanveir Oy
Televisiontie 8, 15860 HOLLOLA, FINLAND
Tel. +358 3 780 3230
Fax. +358 3 780 8091
www.skanveir.com

MAGNETIC LIFTING OF LONG AND HEAVY PLATES



Efficient logistics

Fredericia Shipping A/S in Denmark handles various plate sizes in their warehouse. Plate lengths vary between 5 and 21 meters, weighing up to 22 tons. In addition, demand was to lift several plates per lift to save time at truck loading and unloading.

Safe lifting of long plates

Skanveir magnetic beam with motorised telescopes allows quick and safe handling of different plate sizes. Long telescopes travel enables storage of shorter plates near each other, saving valuable storage space. Strong electromagnets can grip several thick plates per lift. Control system also allows lifting just a single plate when needed.

One man operation

Operator activates the magnets and runs telescopes via a common radio controller to crane and magnets.



Skanveir Oy manufactures Magnetic and Vacuum Lifters for mechanical engineering industries. The company has more than 35 years of experience in its field. The customers are mostly found in shipyards, steel service centres and steel mills.

**SKANVEIR**

Skanveir Oy
Televisiotie 8, 15860 HOLLOLA, FINLAND
Tel. +358 3 780 3230
Fax. +358 3 780 8091
www.skanveir.com

MAGNETIC LIFTING OF REINFORCEMENT BAR BUNDLES



Fast handling speed

Skanveir magnetic beam lifts efficiently 12 m long rebar bundles at steel distributor, increasing warehouse throughput and handling speed. One or two bundles per lift, weighing max. 7,5 tons, are unloaded from train wagons to storage or loaded from storage to trucks for delivery.

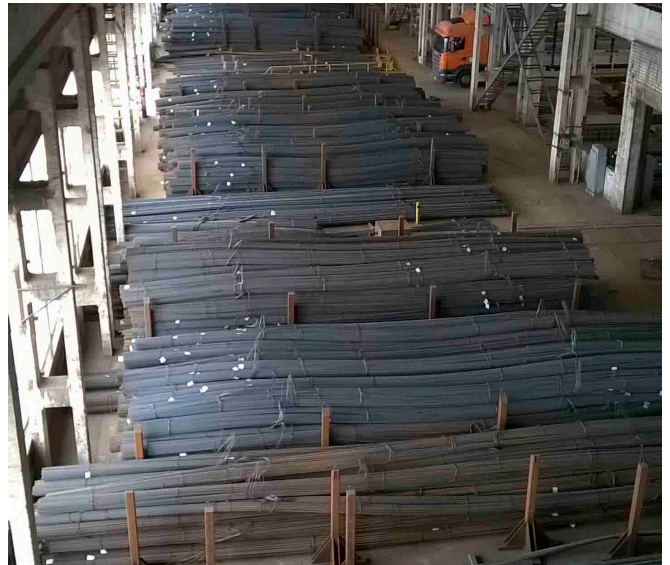
Less personnel

Earlier lifting method with wire slings was time consuming and demanded altogether four employees.

Now with the help of magnetic lifting beam the same operation is done more quickly and safely by only one operator.

Increased safety

The operator is safely in crane cabin from where he has good visibility throughout the loading process. There are no longer employees in the danger zone of lifting.



Skanveir Oy manufactures Magnetic and Vacuum Lifters for mechanical engineering industries. The company has more than 35 years of experience in it's field. The customers are mostly found in shipyards, steel service centres and steel mills.

**SKANVEIR**

Skanveir Oy
Televätiä 8, 15860 HOLLOLA, FINLAND
Tel. +358 3 780 3230
Fax. +358 3 780 8091
www.skanveir.com

NORSU MAGNETIC LIFTER

For easy installation and lifting



Simple installation

A plasma cutting shop bought a Norsu-series lifter for installation onto existing single hook crane. Norsu-lifter is attached to the crane with chains and connected with a standard 3-phase electric plug. It can be easily unhooked and used in several cranes.

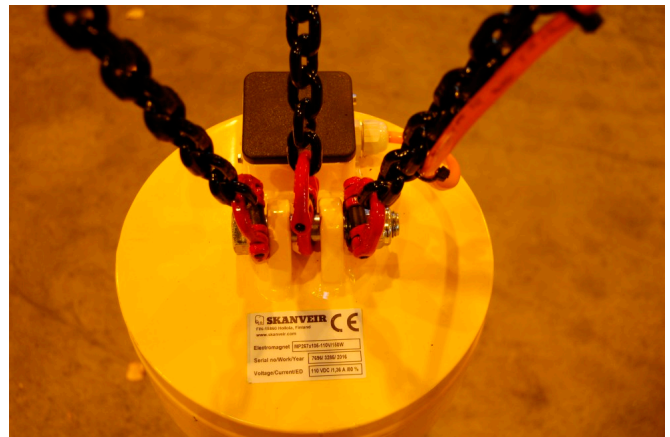
Less personnel required

Earlier lifting method with wire slings was time consuming and demanded several employees, who for the time of lifting were away from productive work.

Now with the help of magnetic lifting beam the same operation is done quickly and safely by only one operator while other employees can concentrate on production.

Individually selectable magnets

Small but strong magnets can be used for lifting full plates as well as lifting and sorting of cut parts from plasma cutting.



Skanveir Oy manufactures Magnetic and Vacuum Lifters for mechanical engineering industries. The company has more than 35 years of experience in it's field. The customers are mostly found in shipyards, steel service centres and steel mills.

**SKANVEIR**

Skanveir Oy
Televisiotie 8, 15860 HOLLOLA, FINLAND
Tel. +358 3 780 3230
Fax. +358 3 780 8091
www.skanveir.com